

Applications of eye tracking technology in driving status detection

Ganzin Research

2023/07/02

Categories of driving distraction

- National Highway Traffic Safety Administration (NHTSA)

1. Cognitive distraction
(mind of the driving duty)



Eye-tracking related

2. Visual distraction
(eyes off the road)

3. Physical distraction
(hands off the wheel)

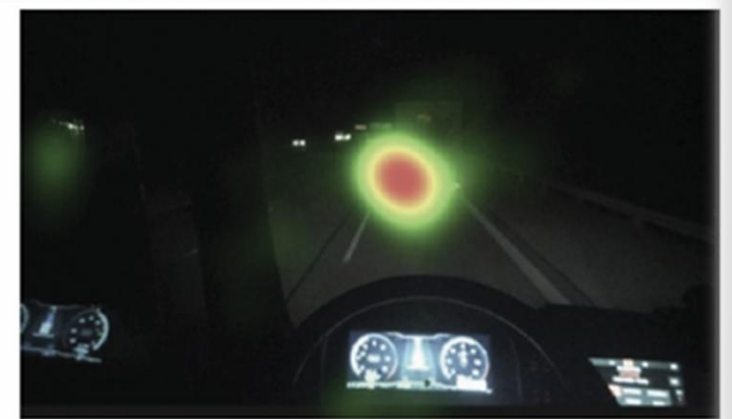
4. Auditory distraction
(ears off the auditory signals)



Source: Getty images

Visual distraction

- Situational awareness (SA): the conscious awareness of actions.
- SA in driving: whether the driver is looking at the import areas related to the driving behaviors.



(Castritius et al., 2021)

Eye movement indexes of cognitive distraction

Fatigue (drowsiness)



- PERCLOS (percentage of eye closure, Wierwille et al, 1994)
- Blink frequency (Schleicher et al., 2008)
- Blink duration
- Delay of lid reopening
- Saccade duration
- Fixation duration
- Microsleep (Thorslund., 2004)

Mental workload



- Pupil size (Laeng & Alnaes, 2019)

Fatigue: PERCLOS

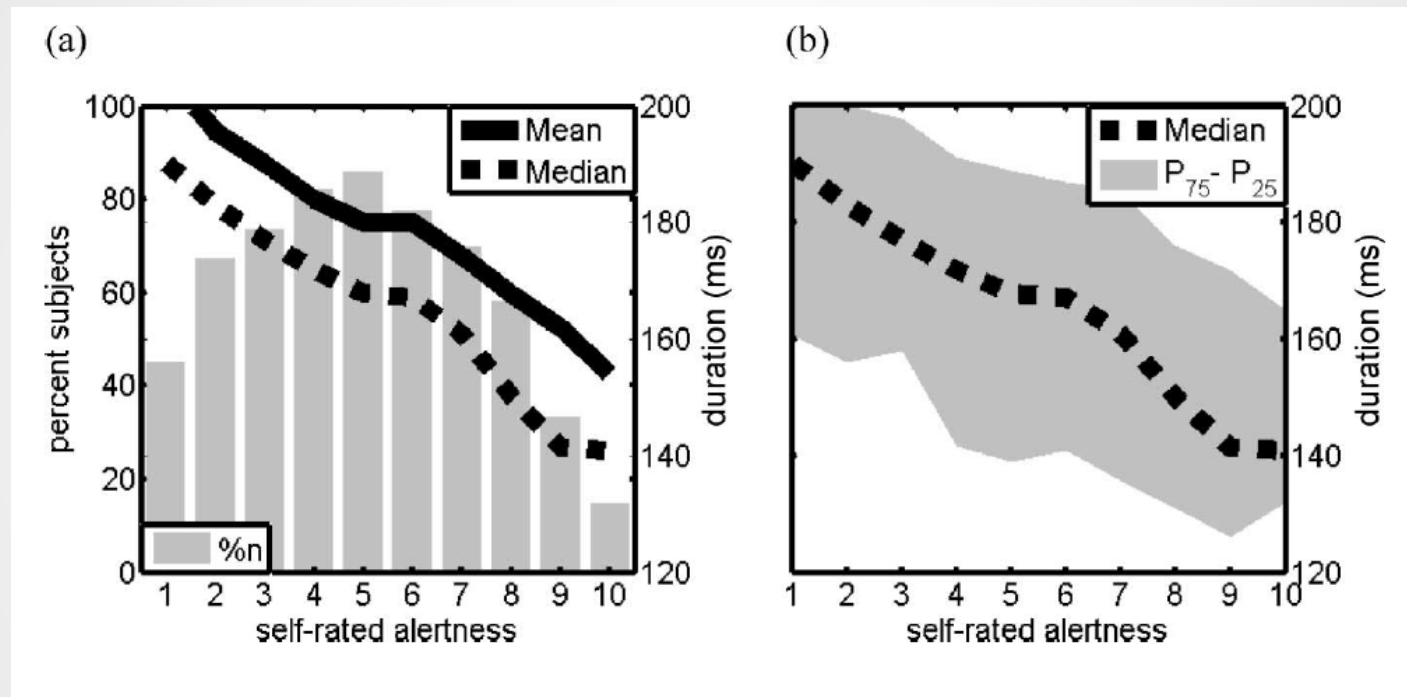
- Percentage of time during a one-minute period for which the eyes remain.

$$PERCLOS = \frac{\text{duration of eye closed}}{\text{total duration}} \times 100\%$$

- Percentage of time during a one-minute period for which the eyes remain.
- PERCLOS80, PERCLOS70, and EYEMEAS (EM) (70, 80% , and half closed)

$$\frac{\text{Duration of eyes closed over 80\%, 70\%, or 50\%}}{\text{Total time}} \geq \text{Threshold}$$

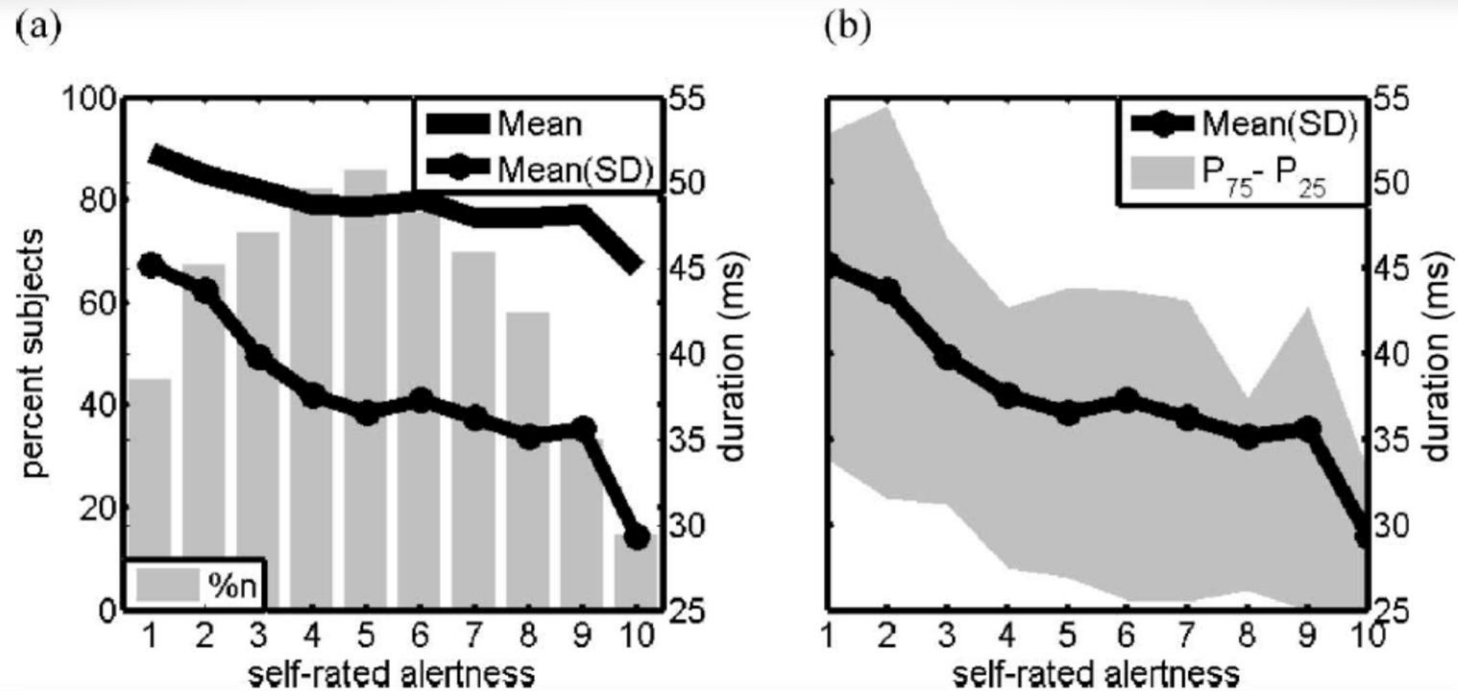
Fatigue: Blink-related indexes



(Schleicher et al., 2008)

- Fatigue ↑: blink duration ↑ 、 blink frequency ↑
- Delay of reopening and standardized lid closure speed are similar indexes.
- Microsleep: the upper lid of the eye remains in contact with the lower lid between 0.5 and 10 seconds.

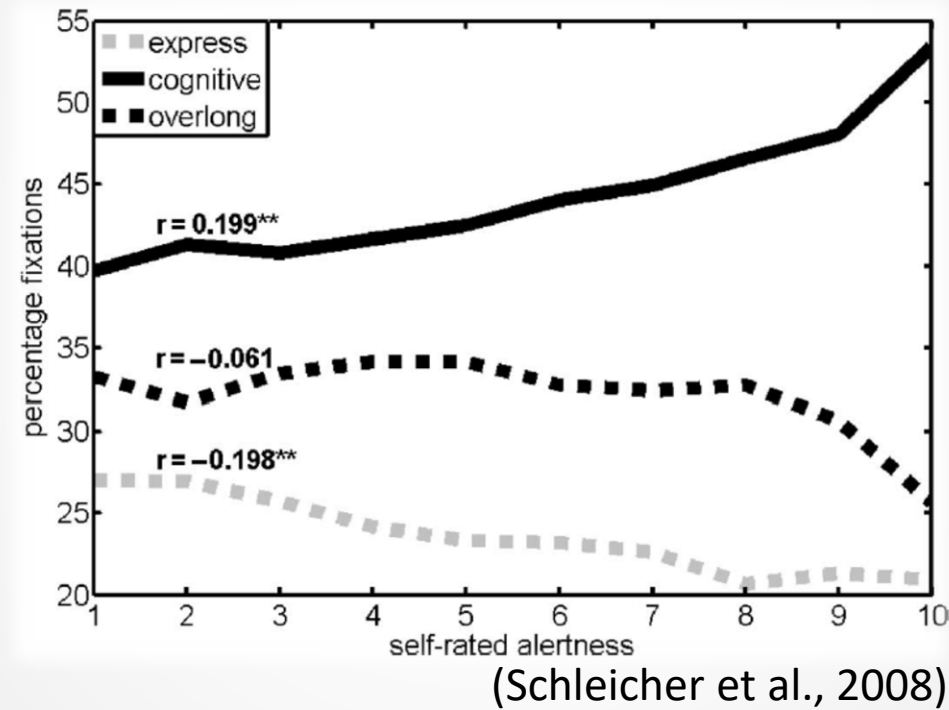
Fatigue: Saccade duration



(Schleicher et al., 2008)

- Fatigue ↑: stand deviation of saccade duration ↑

Fatigue: Fixation duration



- Fatigue ↑: the percentage of cognitive fixation (150 – 900 ms) ↑

Mental workload: pupil dilation



- Mental workload ↑: pupil dilation ↑

References

- Castritius, S. M., Schubert, P., Dietz, C., Hecht, H., Huestegge, L., Liebherr, M., & Haas, C. T. (2021). Driver Situation Awareness and Perceived Sleepiness during Truck Platoon Driving—Insights from Eye-tracking Data. *International Journal of Human–Computer Interaction*, 37(15), 1467-1477.
- Laeng, B., & Alnaes, D. (2019). Pupillometry. *Eye movement research: An introduction to its scientific foundations and applications*, 449-502.
- Schleicher, R., Galley, N., Briest, S., & Galley, L. (2008). Blinks and saccades as indicators of fatigue in sleepiness warnings: looking tired?. *Ergonomics*, 51(7), 982-1010.
- Thorslund, B. (2004). *Electrooculogram analysis and development of a system for defining stages of drowsiness*. Statens väg-och transportforskningsinstitut.
- Wierwille, W. W., Wreggit, S. S., Kirn, C. L., Ellsworth, L. A., & Fairbanks, R. J. (1994). Research on vehicle-based driver status/performance monitoring; development, validation, and refinement of algorithms for detection of driver drowsiness. *final report* (No. HS-808 247).