

Ganzin



Sol Glasses

The Most Easy-To-Access
Research Glasses On The Market

**Wearable Eye
Tracker Bundle**

- | Lightweight & Precise
- | Intuitive & Easy to Use
- | Affordable price

Caelus

Analysis Software

ganzin



Heatmap



AOI



Gaze Plot

Rich Data Visualization

Raw Data Exportable using CSV

Field of Application



Education



Sports



Ergonomics



Industrial Design



Consumer Neuroscience



Interpersonal Interaction



Psychology



Computer Science

+886-2-8667-6689

info@ganzin.com.tw

95, Minquan Rd., Xindian Dist.,
New Taipei City 231, Taiwan

Scan for More
Information



Specifications

Manufacturer: Ganzin Technology, Inc.

Made in Republic of China (Taiwan)

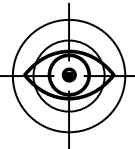


Model: Sol Glasses Wearable Eye Tracker



Hardware Materials and Dimensions

- Eye Tracker Exterior Material: PU
- Nose Pad Material: PU+Rubber
- Eye Tracker Dimensions (mm): 151.22×164.80×53.8
- Eye Tracker Weight (g): 32±5%



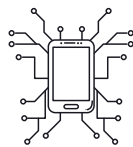
Eye Tracking Technology Specifications

- Number of Eye Sensors: 2 (1 for each eye)
- Number of IR LEDs: 2 (1 for each eye)
- Sampling Rate: 120Hz
- Calibration: No calibration required / Supports single-point calibration
- Pupil Measurement: Available (in mm)
- Blink Detection: Available



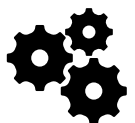
Field of View Camera

- Resolution: 1328×1200
- Sampling Rate: 30Hz
- Field of View: ~ 90°×85°
- Video Format: mp4



Compatible Device: Samsung Galaxy S23

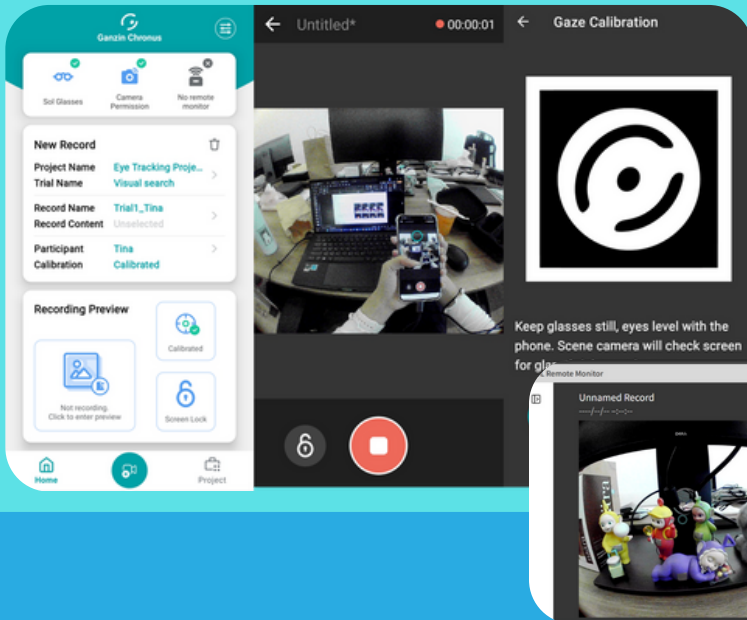
- Power: When fully charged, it can record continuously for approximately 2 hours.
- Storage: Approximately 360 5-minute eye tracking videos can be recorded.



Other Hardware

- Gyroscope: Three-axis
- Microphone: Mono
- Cable Specification: USB 3.1 gen1 (type-c L-I)
- Cable Length (mm): 1000

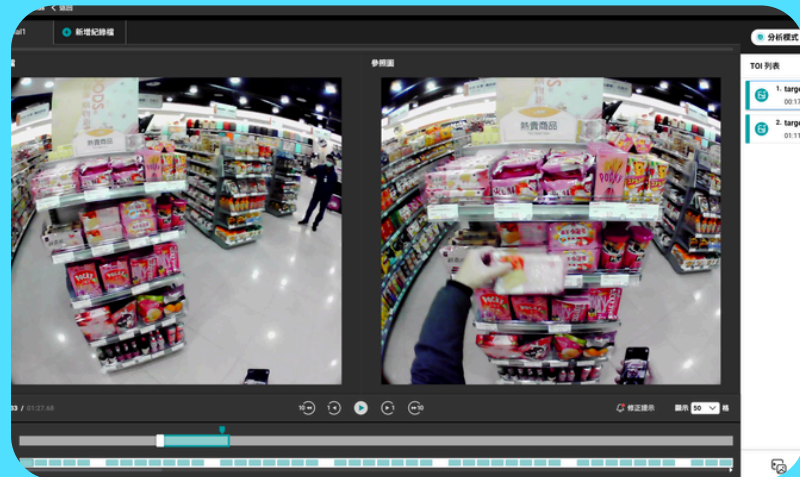
Chronus Features:



1. Record Eye-Tracking video
2. Gaze calibration
3. Project and participant management
4. Remote monitor:
 - Add Tags
 - Monitor recording & phone condition
 - Lock screen

Caelus Analysis Software Features:

1. Project management
2. Gaze and on-scene event preview
3. Automatic gaze remapping
4. Data Visualization:
 - Heatmap
 - Gaze plot
 - AOI (Area of Interest) analysis
 - Event & raw data (for advanced analysis)



Sol SDK Features:

1. Real-time Acquisition of Raw Eye-Tracking Data
2. Real-time Capture of Eye & Scene Camera Footage
3. Remote Control of the Eye Tracker
4. Time Synchronization Calibration
5. Get Camera Parameters

